



# PROGRAM KITAR SEMULA KAEDAH PINTU-KE-PINTU

## DOOR-TO-DOOR COLLECTION & RECYCLING PROGRAMME

### LANGKAH-LANGKAH KITAR SEMULA

#### STEPS TO RECYCLE

1



**ASINGKAN BARANGAN  
BOLEH DIKITAR SEMULA  
DARIPADA SISA DOMESTIK**

SEPARATE DRY MIXED  
RECYCLABLES FROM  
DOMESTIC WASTE

2



**BERSIHKAN DAN  
KERINGKAN DMR**

CLEAN AND DRY THE  
DMR

3



**MASUKKAN DMR KE  
DALAM BEG PLASTIK**

PLACE DMR IN  
A PLASTIC BAG

4



**LETAKKAN DMR DI  
DEPAN RUMAH MENGIKUT  
JADUAL KUTIPAN**

LEAVE DMR OUTSIDE  
ACCORDING TO COLLECTION  
SCHEDULE

**\* DMR - Dry Mixed Recyclables / Barangan Kitar Semula Campuran Kering**

**JOM KITA SEMULA,  
TANGGUNGJAWAB SEMUA**



# RINGKASAN JADUAL SCHEDULE SUMMARY

## JADUAL 1

USJ 3, USJ 3A/3B/3C/3D, USJ 6 DAN SS 12

## JADUAL 2

USJ 4, USJ 17, USJ 18, USJ 19, USJ 20, USJ 22, USJ 23,  
USJ 26 DAN USJ 27

## JADUAL 3

USJ 1, USJ 13, SS 14, USJ HEIGHTS, SUBANG HEIGHTS,  
TP 1 DAN PJS 7

## JADUAL 4

USJ 14, SUBANG MAS, TP 7, USJ 24, TAMAN BATU  
TIGA, TAMAN MUTIARA SUBANG, PUJ 1, PUJ 4, PUJ 5,  
PUJ 6 DAN PUJ 9

## JADUAL 5

**SELKITAR**

BANDAR PUTERI 6, 7, 8, 9, 10, 11, 12  
SAUJANA PUCHONG 1, 5, 5A, 6, 7, 8, 9, 10  
PUCHONG HARTAMAS 1, 2  
MUTIARA INDAH 1, 2  
WAWASAN 1, 2, 3, 4

# JADUAL KUTIPAN PROGRAM KITAR SEMULA PINTU-KE-PINTU BAGI USJ 3, USJ 3A/3B/3C/3D, USJ 6 DAN SS 12

Door-to-Door Collection & Recycling Programme Collection Schedule for USJ 3, USJ 3a/3b/3c/3d, USJ 6 and SS 12

<p><b>ISNIN</b> <b>Monday</b></p>	<p><b>USJ 6</b></p> <ul style="list-style-type: none"> <li>• Jalan USJ 6/1, 6/1a - 6/1d</li> <li>• Jalan USJ 6/2a &amp; 6/2b</li> <li>• Jalan USJ 6/2c - 6/2s</li> <li>• Jalan USJ 6/3a - 6/3d</li> <li>• Jalan USJ 6/4, 6/4a - 6/4k</li> <li>• Jalan USJ 6/5</li> <li>• Jalan USJ 6/6, 6/6a - 6/6p</li> <li>• Jalan USJ 6/7</li> </ul>
<p><b>SELASA</b> <b>Tuesday</b></p>	<p><b>USJ 3</b></p> <ul style="list-style-type: none"> <li>• Jalan USJ 3/1, 3/1a - 3/1h</li> <li>• Jalan USJ 3/2, 3/2a - 3/2j</li> <li>• Jalan USJ 3/3a - 3/3r</li> </ul>
<p><b>RABU</b> <b>Wednesday</b></p>	<p><b>USJ 3A, 3B, 3C &amp; 3D</b></p> <ul style="list-style-type: none"> <li>• Jalan USJ 3A/1 - 3A/13</li> <li>• Jalan USJ 3B/1 - 3B/8</li> <li>• Jalan USJ 3C/1 - 3C/8</li> <li>• Jalan USJ 3D/1 - 3D/6</li> </ul>
<p><b>JUMAAT</b> <b>Friday</b></p>	<p><b>SS 12</b></p> <ul style="list-style-type: none"> <li>• Jalan SS 12/1a - SS 12/1f</li> <li>• Jalan SS 12/2a - SS 12/2e</li> <li>• Jalan SS 12/3, SS 12/3a - SS 12/3d</li> <li>• Jalan SS 12/4</li> </ul>

- **Anda dinasihati supaya meletakkan barangan kitar semula (DMR) yang bersih dan kering di depan pintu rumah anda sebelum 8:30 pagi pada hari kutipan.**

Please place your clean Dry Mixed Recyclables (DMR) in front of the gate of your house before 8:30AM on the collection day.

# JADUAL KUTIPAN PROGRAM KITAR SEMULA PINTU-KE-PINTU BAGI USJ 4, USJ 17, USJ 18, USJ 19, USJ 20, USJ 22, USJ 23, USJ 26 DAN USJ 27

Door-to-Door Collection & Recycling Programme Collection Schedule for USJ 4, USJ 17, USJ 18, USJ 19, USJ 20, USJ 22, USJ 23, USJ 26 and USJ 27

<p><b>SELASA</b> <b>Tuesday</b></p>	<p><b>USJ 19</b></p> <ul style="list-style-type: none"> <li>• USJ 19/5, USJ 19/5b, USJ 19/5c</li> </ul>	<p><b>USJ 20</b></p> <ul style="list-style-type: none"> <li>• USJ 20/1a - USJ 20/1g</li> <li>• USJ 20/2, USJ 20/3, USJ 20/5</li> <li>• USJ 20/6, USJ 20/6a - USJ 20/6k</li> <li>• USJ 20/7, USJ 20/8, USJ 20/8a &amp; USJ 20/8b</li> </ul>
<p><b>RABU</b> <b>Wednesday</b></p>	<p><b>USJ 17</b></p> <ul style="list-style-type: none"> <li>• USJ 17/1</li> <li>• USJ 17/3, USJ 17/3a - USJ 17/3c</li> <li>• USJ 17/4, USJ 17/6</li> <li>• USJ 17/7, USJ 17/7a - USJ 17/7c</li> <li>• USJ 17/8, USJ 17/9a</li> <li>• USJ 17/10 &amp; USJ 17/10a</li> <li>• USJ 17/12</li> <li>• USJ 17/13a</li> <li>• USJ 17/15 - USJ 17/17</li> </ul>	<p><b>USJ 4/6 &amp; 4/7</b></p> <ul style="list-style-type: none"> <li>• USJ 4/6, USJ 4/6a - USJ 4/6g</li> <li>• USJ 4/7</li> </ul>
<p><b>JUMAAT</b> <b>Friday</b></p>	<p><b>USJ 18</b></p> <ul style="list-style-type: none"> <li>• USJ 18/1, USJ 18/1a - USJ 18/1c</li> <li>• USJ 18/2, USJ 18/2a - USJ 18/2c</li> <li>• USJ 18/3 - USJ 18/7</li> </ul> <p><b>USJ 23</b></p> <ul style="list-style-type: none"> <li>• USJ 23/3, USJ 23/3a - USJ 23/3c</li> <li>• USJ 23/4</li> <li>• USJ 23/5, USJ 23/5a - USJ 23/5c</li> </ul>	<p><b>USJ 26</b></p> <ul style="list-style-type: none"> <li>• USJ 26/1, USJ 26/1a - USJ 26/1e</li> <li>• USJ 26/2</li> <li>• USJ 26/3, USJ 26/3a &amp; USJ 26/3b</li> </ul> <p><b>USJ 27</b></p> <ul style="list-style-type: none"> <li>• USJ 27/1</li> <li>• USJ 27/1a - USJ 27/1c</li> </ul> <p><b>USJ 4/8 &amp; 4/9</b></p> <ul style="list-style-type: none"> <li>• USJ 4/8</li> <li>• USJ 4/9, USJ 4/9a - USJ 4/9g</li> </ul>
<p><b>SABTU</b> <b>Saturday</b></p>	<p><b>USJ 22</b></p> <ul style="list-style-type: none"> <li>• USJ 22/1, USJ 22/1a - USJ 22/1c</li> <li>• USJ 22/2, USJ 22/2a - USJ 22/2e</li> </ul>	<p><b>Tanamera</b></p>

- **Anda dinasihati supaya meletakkan barangan kitar semula (DMR) yang bersih dan kering di depan pintu rumah anda sebelum 8:30 pagi pada hari kutipan.**

Please place your clean Dry Mixed Recyclables (DMR) in front of the gate of your house before 8:30AM on the collection day.

# JADUAL KUTIPAN PROGRAM KITAR SEMULA PINTU-KE-PINTU BAGI USJ 1, USJ 13, SS 14, USJ HEIGHTS, SUBANG HEIGHTS, TP 1 DAN PJS 7

Door-to-Door Collection & Recycling Programme Collection Schedule for USJ 1, USJ 13, SS 14, USJ HEIGHTS, SUBANG HEIGHTS, TP 1 and PJS 7

<p><b>ISNIN</b> <b>Monday</b></p>	<p><b>USJ 13</b></p> <ul style="list-style-type: none"> <li>• PJS 7/7 – PJS 7/13</li> <li>• PJS 7/18</li> </ul>
<p><b>SELASA</b> <b>Tuesday</b></p>	<p><b>SS 14</b></p> <ul style="list-style-type: none"> <li>• PJS 7/1a – 7/6</li> <li>• PJS 7/15 - 7/15h</li> </ul>
<p><b>RABU</b> <b>Wednesday</b></p>	<ul style="list-style-type: none"> <li>• <b>USJ HEIGHTS</b></li> <li>• <b>SUBANG HEIGHTS</b></li> </ul>
<p><b>KHAMIS</b> <b>Thursday</b></p>	<p><b>USJ 1</b></p> <ul style="list-style-type: none"> <li>• TP 1</li> </ul>

- **Anda dinasihati supaya meletakkan barangan kitar semula (DMR) yang bersih dan kering di depan pintu rumah anda sebelum 8:30 pagi pada hari kutipan.**

Please place your clean Dry Mixed Recyclables (DMR) in front of the gate of your house before 8:30AM on the collection day.

**JADUAL KUTIPAN PROGRAM KITAR SEMULA PINTU-KE-PINTU BAGI USJ 14,  
SUBANG MAS, TP 7, USJ 24, TAMAN BATU TIGA, TAMAN MUTIARA SUBANG, PUJ 1,  
PUJ 4, PUJ 5, PUJ 6 DAN PUJ 9**

Door-to-Door Recycling Collection Schedule for USJ 14, Subang Mas, TP 7, USJ 24, Taman Batu Tiga, Taman Mutiara Subang,  
PUJ 1, PUJ 4, PUJ 5, PUJ 6 and PUJ 9

<b>ISNIN</b> <b>Monday</b>	<ul style="list-style-type: none"> <li>• <b>USJ 14</b></li> </ul>
<b>RABU</b> <b>Wednesday</b>	<ul style="list-style-type: none"> <li>• <b>SUBANG MAS</b></li> <li>• <b>TP 7</b></li> </ul>
<b>KHAMIS</b> <b>Thursday</b>	<ul style="list-style-type: none"> <li>• <b>USJ 24</b></li> <li>• <b>TAMAN BATU TIGA</b></li> <li>• <b>TAMAN MUTIARA SUBANG</b></li> </ul>
<b>JUMAAT</b> <b>Friday</b>	<ul style="list-style-type: none"> <li>• <b>PUJ 1</b></li> <li>• <b>PUJ 4</b></li> <li>• <b>PUJ 5</b></li> </ul>
<b>SABTU</b> <b>Saturday</b>	<ul style="list-style-type: none"> <li>• <b>PUJ 6</b></li> <li>• <b>PUJ 9</b></li> </ul>

- **Anda dinasihati supaya meletakkan barangan kitar semula (DMR) yang bersih dan kering di depan pintu rumah anda sebelum 8:30 pagi pada hari kutipan.**

Please place your clean Dry Mixed Recyclables (DMR) in front of the gate of your house  
before 8:30AM on the collection day.



# BARANGAN KITAR SEMULA YANG DITERIMA



## ITEMS ACCEPTED FOR RECYCLING

### KERTAS PAPER



**Kertas lama, cebisan kertas, sampul surat, surat khabar, majalah & katalog, direktori perniagaan**

Old paper, shredded paper, envelope, newspaper, magazine and business directory

*\*Cebisan kertas perlu dikumpulkan dalam bag berasingan  
\*Shredded paper must be placed in a separate bag*

### KADBOD CARDBOARD



**Kotak coklat, kotak kasut, kotak hadiah, kotak bijirin**

Chocolate box, shoe box, gift box, and cereal box

*\*Semua kadbod perlu dileperkan  
\*All cardboard boxes must be flattened*

### KOTAK MINUMAN USED BEVERAGE CARTON



**Kotak minuman susu, jus buah-buahan dan minuman lain**

Packages for milk, fruit juices and other beverages

### KACA GLASS



**Semua jenis botol kaca dan balang**

All types of glass bottle and jar

*\*Sila tanggalkan penutup botol kaca sebelum mengitar semula*

*\*Please remove glass bottle lids before recycling*

### PLASTIK PLASTIC



**Semua jenis plastik boleh diterima**

All types of plastic is acceptable

### LOGAM METAL



**Tin makanan & minuman, dulang aluminium**

Food and beverage cans, aluminium trays



# BARANGAN YANG TIDAK DITERIMA

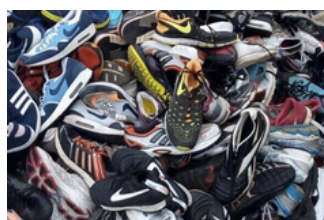
## ITEMS NOT ACCEPTED FOR RECYCLING



**Tisu terpakai**  
Used tissues



**Cermin**  
Mirror



**Kasut**  
Shoes



**Beg bagasi**  
Luggage bags



**Sisa klinikal**  
Clinical waste



**Minyak masak terpakai**  
Used cooking oil



**Tayar**  
Tyres



**Sisa basah/ dapur**  
Wet/ kitchen waste



**Puntung Rokok**  
Cigarette buds



**Lampin**  
Diapers



**Perabot kayu**  
Wooden furnitures



**Sisa elektronik**  
Electronic waste

**INGIN MENGENALI PROGRAM KAMI DENGAN LEBIH LANJUT?**  
 Want to know more about our programme?

1



**Imbas kod QR ini untuk melayari laman sesawang Nestlé Malaysia!**

Scan this QR code and visit the Nestlé Malaysia website

**Muat turun aplikasi "3R Famili"**

Download the "3R Famili" application

2

- Collection schedule**  
Jadual Kutipan
- Truck arrival notification**  
Notifikasi ketibaan trak
- Contact us via Whatsapp**  
Hubungi kami melalui WhatsApp
- Real time truck location**  
Lokasi trak secara langsung
- Request to collect**  
Permintaan untuk kutipan



**Sebarang pertanyaan, sila hubungi:**  
 Any enquiries, kindly contact



**JABATAN PENGURUSAN ALAM SEKITAR**

Majlis Bandaraya Subang Jaya,  
 Persiaran Perpaduan, USJ 5,  
 47610 Subang Jaya, Selangor Darul Ehsan.  
 03-80264366 / 4420 (Tel)

Emel- ain.mohammad@mbsj.gov.my | muhamad.jun@mbsj.gov.my



## Weekly Dedicated Truck Collection



<b>ISNIN</b> <b>Monday</b>	<ul style="list-style-type: none"><li>• Bandar Puteri 8</li><li>• Bandar Puteri 9</li><li>• Saujana Puchong 8</li><li>• Wawasan 2</li></ul>
<b>SELASA</b> <b>Tuesday</b>	<ul style="list-style-type: none"><li>• Bandar Puteri 6</li><li>• Bandar Puteri 7</li><li>• Saujana Puchong 6</li><li>• Saujana Puchong 9</li><li>• Saujana Puchong 10</li></ul>
<b>RABU</b> <b>Wednesday</b>	<ul style="list-style-type: none"><li>• Bandar Puteri 10</li><li>• Puchong Hartamas 1</li><li>• Puchong Hartamas 2</li><li>• Wawasan 1</li></ul>
<b>KHAMIS</b> <b>Thursday</b>	<ul style="list-style-type: none"><li>• Bandar Puteri 12</li><li>• Saujana Puchong 1</li></ul>
<b>JUMAAT</b> <b>Friday</b>	<ul style="list-style-type: none"><li>• Bandar Puteri 11</li><li>• Saujana Puchong 5</li><li>• Saujana Puchong 5A</li><li>• Saujana Puchong 7</li></ul>
<b>SABTU</b> <b>Saturday</b>	<ul style="list-style-type: none"><li>• Mutiara Indah 1</li><li>• Mutiara Indah 2</li><li>• Wawasan 3</li><li>• Wawasan 4</li></ul>



# BARANGAN KITAR SEMULA YANG DITERIMA

**SELKITAR**

ITEMS ACCEPTED FOR RECYCLING

## PLASTIK PLASTIC



**Semua jenis plastik boleh diterima**

All types of plastic is acceptable

## KADBOD CARDBOARD



**Kotak coklat, kotak kasut, kotak hadiah, kotak bijirin**

Chocolate box, shoe box, gift box, and cereal box

*\*Semua kadbod perlu dileperkan*

*\*All cardboard boxes must be flattened*

## KOTAK MINUMAN USED BEVERAGE CARTON



**Kotak minuman susu, jus buah-buahan dan minuman lain**

Packages for milk, fruit juices and other beverages

## KERTAS PAPER



**Kertas lama, cebisan kertas, sampul surat, surat khabar, majalah & katalog, direktori perniagaan**

Old paper, shredded paper, envelope, newspaper, magazine and business directory

*\*Cebisan kertas perlu dikumpulkan dalam bag berasingan*

*\*Shredded paper must be placed in a separate bag*

## LOGAM METAL



**Tin makanan & minuman, dulang aluminium**

Food and beverage cans, aluminium trays



# BARANGAN YANG TIDAK DITERIMA

ITEMS NOT ACCEPTED FOR RECYCLING



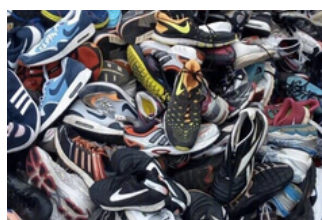
**Tisu terpakai**

Used tissues



**Cermin**

Mirror



**Kasut**

Shoes



**Beg bagasi**

Luggage bags



**Sisa klinikal**

Clinical waste



**Minyak masak terpakai**

Used cooking oil



**Tayar**

Tyres



**Sisa elektronik**

Electronic waste



**Puntung Rokok**

Cigarette buds



**Lampin**

Diapers



**Perabot kayu**

Wooden furnitures



**Kaca**

Glass



## INGIN MENGENALI PROGRAM KAMI DENGAN LEBIH LANJUT?

Want to know more about our programme?



**Imbas kod QR ini untuk melayari  
laman sesawang Nestlé Malaysia!**

Scan this QR code and visit the Nestlé Malaysia website

2

## Muat turun aplikasi "iClean Selangor"

Download the "iClean Selangor" application



**Sebarang pertanyaan, sila hubungi:**  
Any enquiries, kindly contact

### KDEB WASTE MANAGEMENT SDN BHD

Level 18, Menara Bank Rakyat Shah Alam  
No. 1, Jalan Indah 14/8, Seksyen 14, 40000 Shah Alam,  
Selangor Darul Ehsan.  
03 - 5511 4344 (Tel)

