



## PROGRAM

# SELKITAR

## STRATA PROPERTIES RECYCLING PROGRAMME

### PROGRAM KITAR SEMULA HARTANAH STRATA

## LANGKAH-LANGKAH KITAR SEMULA

### STEPS TO RECYCLE

1



**ASINGKAN BARANGAN BOLEH DIKITAR SEMULA DARIPADA SISA DOMESTIK**

SEPARATE DRY MIXED RECYCLABLES FROM DOMESTIC WASTE

2



**BERSIHKAN DAN KERINGKAN DMR**

CLEAN AND DRY THE DMR

3



**MASUKKAN DMR KE DALAM BEG PLASTIK ATAU KOTAK**

PLACE DMR IN A PLASTIC BAG OR BOX

4



**LETAKKAN DMR DI KAWASAN PENGUMPULAN DI ARAS BAWAH MENGIKUT JADUAL KUTIPAN**

DROP DMR IN DESIGNATED COLLECTION AREA AT GROUND FLOOR ACCORDING TO COLLECTION SCHEDULE

\* DMR - Dry Mixed Recyclables / Barangan Kitar Semula Campuran Kering

JOM KITAR SEMULA,  
TANGGUNGJAWAB SEMUA



# JADUAL KUTIPAN **SEPANG**

## COLLECTION SCHEDULE FOR SEPANG

<b>ISNIN</b> <b>Monday</b>	<ul style="list-style-type: none"><li>• Taman D' Alpinia Urbana</li><li>• Taman D' Alpinia Tropika</li><li>• Taman Prima Tropika</li><li>• Taman Alam Putra (Sanctuary)</li></ul>
<b>SELASA</b> <b>Tuesday</b>	<ul style="list-style-type: none"><li>• Taman Sierra 1</li><li>• Taman Sierra 2</li><li>• Taman Lestari Permai</li><li>• Taman Suria Tropika</li></ul>
<b>RABU</b> <b>Wednesday</b>	<ul style="list-style-type: none"><li>• Taman Sierra 12</li><li>• Taman Myra Meranti</li><li>• Taman Meranti Indah</li><li>• Taman Kipark</li><li>• Taman Bromelia</li><li>• Taman Laman &amp; Bayu</li></ul>
<b>KHAMIS</b> <b>Thursday</b>	<ul style="list-style-type: none"><li>• Taman Sierra 6</li><li>• Taman Sierra 8</li><li>• Nilam Terraces</li><li>• Andira Park</li></ul>
<b>JUMAAT</b> <b>Friday</b>	<ul style="list-style-type: none"><li>• Taman Sierra 6</li><li>• Taman Sierra 11</li><li>• Meranti Residensi</li><li>• Elegan Residensi</li></ul>
<b>SABTU</b> <b>Saturday</b>	<ul style="list-style-type: none"><li>• Abadi Height</li><li>• Taman Sierra 3</li><li>• Taman Dahlia</li><li>• Taman Foreston</li></ul>

• **Tiada Kutipan pada hari cuti umum**  
*No collection during Public Holidays*

• **Jadual tertakuk kepada perubahan yang akan diumumkan terlebih dahulu**  
*Schedule is subject to changes that will be announced in advance*



# BARANGAN KITAR SEMULA YANG DITERIMA

ITEMS ACCEPTED FOR RECYCLING

## PLASTIK PLASTIC



Semua jenis plastik boleh diterima

All types of plastic is acceptable

## KADBOD CARDBOARD



Kotak coklat, kotak kasut, kotak hadiah, kotak bijirin

Chocolate box, shoe box, gift box, and cereal box

*\*Semua kadbod perlu dileperkan*

*\*All cardboard boxes must be flattened*

## KOTAK MINUMAN USED BEVERAGE CARTON



Kotak minuman susu, jus buah-buahan dan minuman lain

Packages for milk, fruit juices and other beverages

## KERTAS PAPER



Kertas lama, cebisan kertas, sampul surat, surat khabar, majalah & katalog, direktori perniagaan

Old paper, shredded paper, envelope, newspaper, magazine and business directory

*\*Cebisan kertas perlu dikumpulkan dalam bag berasingan*

*\*Shredded paper must be placed in a separate bag*

## LOGAM METAL



Tin makanan & minuman, dulang aluminium

Food and beverage cans, aluminium trays



# BARANGAN YANG TIDAK DITERIMA

ITEMS NOT ACCEPTED FOR RECYCLING



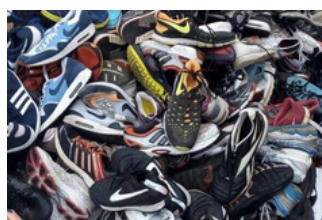
Tisu terpakai

Used tissues



Cermin

Mirror



Kasut

Shoes



Beg bagasi

Luggage bags



Sisa klinikal

Clinical waste



Minyak masak terpakai

Used cooking oil



Tayar



Sisa elektronik



Puntung Rokok



Lampin



Perabot kayu



Kaca



## INGIN MENGENALI PROGRAM KAMI DENGAN LEBIH LANJUT?

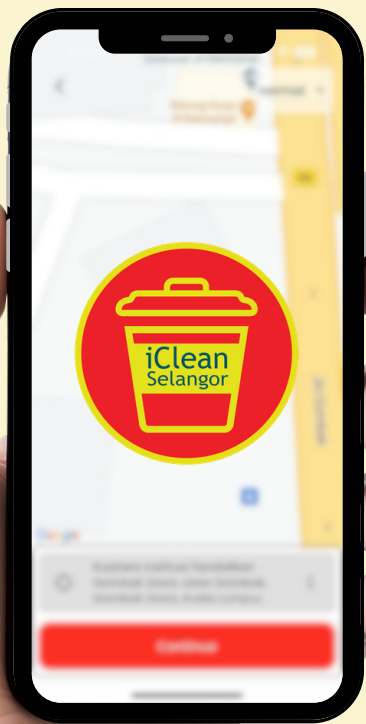
Want to know more about our programme?



Imbas kod QR ini untuk melayari  
laman sesawang Nestlé Malaysia!

Scan this QR code and visit the Nestlé Malaysia website

2



## Muat turun aplikasi "iClean Selangor"

Download the "iClean Selangor" application

Download on the  
App Store

GET IT ON  
Google Play



**Sebarang pertanyaan, sila hubungi:**

Any enquiries, kindly contact



### KDEB WASTE MANAGEMENT SDN BHD

Level 18, Menara Bank Rakyat Shah Alam  
No. 1, Jalan Indah 14/8, Seksyen 14, 40000 Shah Alam,  
Selangor Darul Ehsan.  
03 - 5511 4344 (Tel)

