



PROGRAM KITAR SEMULA KAEDAH PINTU-KE-PINTU

DOOR-TO-DOOR COLLECTION & RECYCLING PROGRAMME

LANGKAH-LANGKAH KITAR SEMULA

STEPS TO RECYCLE

1



**ASINGKAN BARANGAN
BOLEH DIKITAR SEMULA
DARIPADA SISA DOMESTIK**

SEPARATE DRY MIXED
RECYCLABLES FROM
DOMESTIC WASTE

2



**BERSIHKAN DAN
KERINGKAN DMR**

CLEAN AND DRY
THE DMR

3



**MASUKKAN DMR KE
DALAM BEKAS
KUNING**

PLACE DMR IN
YELLOW BIN PROVIDED

4



**LETAKKAN DMR DI
DEPAN RUMAH MENGIKUT
JADUAL KUTIPAN**

LEAVE DMR OUTSIDE
ACCORDING TO
COLLECTION SCHEDULE

* DMR - Dry Mixed Recyclables / Barangan Kitar Semula Kering





FASA DI PETALING JAYA

PHASES IN PETALING JAYA

FASA 1

Ara Impian, Ara vista , Ara Putri, Winchester, Damansara Idaman, Idaman Villa, Ara Idaman, Laman Ara, Ara Putra, Seri Pilmoor, Kelana Idaman, Damansara Legenda, SD1, SD2, SD3, SD4, SD7, SD8, SD9, SD10, SD 11, SD 12, SD 13, SD 15

FASA 2

Kota Damansara (Seksyen 4, Seksyen 5, Seksyen 6, Seksyen 7, Seksyen 8, Seksyen 9, Seksyen 10, Seksyen 11),
Kg. Selamat, Casabella, Taman Bukit Mayang Emas, Aman Suria, Tropicana Golf, Tropicana Indah, Mutiara Damansara, Sunway Rymba Hills

FASA 3

SS 4, SS 4A, SS 4B, SS 4C, SS 4D, SS 5, SS 5A, SS 5B, SS 5C, SS 5D, SS 7, SS 20, SS 21, SS 23, SS 24, SS 25, SS 26

FASA 4

Sunway Damansara, SS 1, SS 2, SS 3, SS 8, SS 9, Seksyen 10, Seksyen 11, Seksyen 12, Seksyen 16, Seksyen 19, Seksyen 20, Seksyen 22, PJU 8, PJU 10

FASA 5

Seksyen 1A, Seksyen 2, Seksyen 3, Seksyen 4, Seksyen 5, Seksyen 6, Seksyen 7, Seksyen 8, Seksyen 9, Seksyen 17, Seksyen 18, Seksyen 21, Seksyen 51A

BANDAR UTAMA

BU 1, 2, 3, 4, 6, 7, 10, 11, 12

JADUAL KUTIPAN MBPJ FASA 1

MBPJ PHASE 1 COLLECTION SCHEDULE



ISNIN Monday	<ul style="list-style-type: none">• Ara Impian (PJU1A/19, 21, 23, 25, 27)• Ara Vista (PJU1A/29)• Damansara Idaman• Idaman Villas• Winchester Ara Damansara• Ara Putri (PJU1A/1)
SELASA Tuesday	<ul style="list-style-type: none">• Ara Idaman (PJU1A/24, 26, 28, 30, 32),• Laman Ara (PJU1A/31, 33, 35 & 36),• Damansara Legenda,• Seri Pilmoor (Bayu Timur), Kelana Idaman Ara Putra (PJU1A/3)
RABU Wednesday	<ul style="list-style-type: none">• SD 2• SD 7/2, 7/3, 7/4 & 7/5• SD 10/1, 10/2 & 10/3
KHAMIS Thursday	<ul style="list-style-type: none">• SD 1• SD 4• SD 8• SD 9
JUMAAT Friday	<ul style="list-style-type: none">• SD 3• SD 12• SD 10/4, 10/5, 10/6, 10/7 & 10/8
SABTU Saturday	<ul style="list-style-type: none">• SD 7/1• SD 11• SD 13• SD 15



JADUAL KUTIPAN MBPJ FASA 2

MBPJ PHASE 2 COLLECTION SCHEDULE

ISNIN Monday	<ul style="list-style-type: none">• Jalan Camar 4/12 – 4/20• Jalan Sepah Puteri 5/2, 5/3• Jalan Cecawi 6/3, 6/4, 6/6 – 6/17, 6/20 – 6/26• D' Shire 61 (4/12, 4/13A & 4/13B)• Sierra Damansara (4/14 - 4/20)• Seri Utama 5/2 & 5/3	<ul style="list-style-type: none">• Cecawi 6/20 - 6/26• Cecawi 6/6 – 6/13• B'sedara Residence (6/3 & 6/4)• Cecawi 6/14 & 6/15• Cecawi 6/16 & 6/17
SELASA Tuesday	<ul style="list-style-type: none">• Jalan Camar 4/7 – 4/11, 4/21 – 4/26• Jalan Sepah Puteri 5/4 – 5/19, 5/22 – 5/25• Jalan Cecawi 6/1, 6/5, 6/27 – 29, 6/31, 6/32• D' Shire Villa (Townhouse)• Camar 4/7 - 4/11• Villa Damansara (4/21 - 4/26)	<ul style="list-style-type: none">• Seri Utama 5/4 - 5/19• Seri Utama 5/20 - 5/25• Cecawi 6/5• Cecawi 6/1• Cecawi 6/27, 6/28 & 6/29• Lakeside Residence (6/31 & 6/32)
RABU Wednesday	<ul style="list-style-type: none">• Jalan Pekaka 8/17, 8/18 & 8/19• Jalan Rimba Riang (Seksyen 9)• Jalan Polo (Seksyen 10)• Jalan Kenyalang 11/7 – 11/17• Pekaka Ria (8/17 - 8/19)• Rimba Valley (9/9 - 9/14)• The Residency (9/16)• Villa Astana (9/7 & 9/8)	<ul style="list-style-type: none">• Polo 10/1 - 10/7• Botanic Villa (11/16 & 11/17)• D' Rimba (Townhouse)• Kenyalang Hill (11/14)• D' Villa Equestrian (11/15)• Bayu Damansara (11/7 - 11/13)• Rimba Riang 9/1• Rimba Riang 9/3 & 9/5• Rimba Riang 9/2 & 9/4
KHAMIS Thursday	<ul style="list-style-type: none">• Jalan Casabella 1 – 5• Jalan Pekaka 8/1, 8/9 – 8/15• Jalan Kenyalang 11/3 – 11/6, 11/18• Jalan Casabella 1 – 5• Pekaka 8/9 - 8/14• Taman Tasik Pekaka (8/15)• Pekaka 8/1b & 81/c• D' Villa Botany (11/5)• Bayu Perdana 1 (11/4g-i)	<ul style="list-style-type: none">• Bayu Perdana 2 (11/4a-d)• Bayu 23 (11/4)• Laman Bayu (11/3)• D' Villa Avenue (11/6)• Polo Vista (11/18) <p>Taman Bukit Mayang Emas :</p> <ul style="list-style-type: none">• BM 1/1 – 1/11 <p>Aman Suria :</p> <ul style="list-style-type: none">• PJU 1/46A – 1/46G
JUMAAT Friday	<p>Tropicana Golf :</p> <ul style="list-style-type: none">• TR1, TR2 & TR3 <p>Mutiara Damansara :</p> <ul style="list-style-type: none">• PJU 7/17 – 7/25 & PJU 7/27 – 7/30	<p>Tropicana Indah :</p> <ul style="list-style-type: none">• PJU 3/11 (Golf Villa), PJU 3/12 (A–H), PJU 3/16 (A–D), PJU 3/18 (A–J) & PJU 3/20 (A–F)
SABTU Saturday	<p>Tropicana Golf :</p> <ul style="list-style-type: none">• TR4, TR5, TR6, TR7, TR8 & TR9 <p>Mutiara Damansara :</p> <ul style="list-style-type: none">• PJU 7/8 – 7/11, PJU 7/12 & PJU 7/26	<p>Tropicana Indah :</p> <ul style="list-style-type: none">• PJU 3/15 (A–D), PJU 3/17 (A–B) & PJU 3/19 <p>Sunway Rymba Hills :</p> <ul style="list-style-type: none">• PJU 3/51 <p>Seksyen 7 (Nuri), Kota Damansara</p> <ul style="list-style-type: none">• Kediaman Nuri (7/5-7/15) Nuri 7/19 - 7/22



JADUAL KUTIPAN MBPJ FASA 3

MBPJ PHASE 3 COLLECTION SCHEDULE

ISNIN Monday	<ul style="list-style-type: none">• SS 4C/1, 4C/3 – 4C/18, 4C/20 & 4C/22• SS 4D/1 – 4D/10, 4D/12, 4D/14, 4D/16 & 4D/18• SS 5D/1 – 5D/5, 5D/6 & 6a• SS 5D/7 – 5D/10, 5D/11, 11a & 11b, 5D/13	<ul style="list-style-type: none">• SS 7/1 – 7/3, 7/3a, 7/4, 7/4a – 7/4f• SS 7/5, 7/6, 7/6a – 7/6e, 7/7 – 7/12• SS 7/13, 7/13a & 7/13b, 7/14, 7/15, 7/16• SS 7/18, 7/19, 7/20, 7/22, 7/22a, 7/22b
SELASA Tuesday	<ul style="list-style-type: none">• SS 4A/1, 4A/2, 4A/3, 4A/3a, 4A/4, 4A/4a, 4A/5, 4A/5a• SS 4B/1, 4B/1a, 4B/2 – 4B/14, 4B/14a-b, 4B/16 & 4B/18• SS 4/6, 4/8, 4/9, 4/10, 4/11, 4/13, 4/15, 4/17, 4/19 & 4/21	<ul style="list-style-type: none">• SS 5/1 & 5/2• SS 5A/1 – 5A/19, 5A/17a-c• SS 5B/1 – 5B/6, 5B/8• SS 5C/1 & 5C/1a – 5C/1f• SS 5C/2 – 5C/4, 5C/4a & 4b• SS 5C/5, 5C/6 & 5C/6a, SS 5C/7 – 5C/14
RABU Wednesday	<ul style="list-style-type: none">• SS 20/1 – 20/10• SS 20/11 – 20/20• SS 20/21 – 20/26• SS 21/25, 21/29, 21/31, 21/44, 21/46, 21/48, 21/48a, 21/50, 21/52, 21/54, 21/56a	<ul style="list-style-type: none">• SS 25/1, 25/3 – 25/10• SS 25/11, 25/12 & 25/13
KHAMIS Thursday	<ul style="list-style-type: none">• SS 21/1 – 21/10• SS 21/11 – 21/20 & 21/17a• SS 21/21 – 21/24, 21/26, 21/28, 21/30, 21/32, 21/34, 21/36, 21/38, 21/40, 21/42 & 42a	<ul style="list-style-type: none">• SS 23/19, 23/19a – 23/19d• SS 23/21, 23/23, 23/25 & 23/27
JUMAAT Friday	<ul style="list-style-type: none">• SS 23/1 – 23/5, 23/2a, 23/4a-c• SS 23/6, 23/6a – 23/6g• SS 23/7 – 23/10, 23/10a – 23/10c, 23/12a, 23/17• SS 23/29, 23/31, 23/33, 23/35, 23/37 & 23/39	<ul style="list-style-type: none">• SS 26/1 – 26/5, 26/3a-c• SS 26/7, 26/7a-b, 26/9, 26/9a-b• SS 26/10, 26/10a, 26/12 & 26/14,• SS 26/16 – 26/25
SABTU Saturday	<ul style="list-style-type: none">• SS 24/1 – 24/10• SS 24/11 – 24/20• SS 24/21 – 24/26• SS 25/14 – 25/17• SS 25/19 & 25/21	<ul style="list-style-type: none">• SS 25/18, 25/20 & 25/22• SS 25/25 – 25/33• SS 25/34 – 39, 25/39a• SS 7/17, 7/17b – 7/17k• SS 7/24, 7/26a, 7/26b, 7/28, 7/29 & 7/30

JADUAL KUTIPAN MINGGUAN MBPJ FASA 4

MBPJ PHASE 4 WEEKLY COLLECTION SCHEDULE



<p style="text-align: center;">ISNIN Monday</p>	<p>Sunway Damansara</p> <ul style="list-style-type: none"> • Challis Damansara (PJU 3/30) • Bukit Sunway Damansara (PJU 3/28) • 28 Residency (PJU 3/26 & 3/28a- 28n) • Avenue 23 (PJU 3/23 & 3/23a - 23g) • Laman Impian garden villa (PJU 3/24) <p>SS9</p> <ul style="list-style-type: none"> • SS 9/1 - 9/10 • SS 9/11 - 9/16 • SS 9/18 & 9A/20 • SS 9A/5 - 9A/7 	<p>Seksyen 10, Seksyen 11 & Lorong Timur</p> <p>PJU 8 Desa Temuan</p> <ul style="list-style-type: none"> • Jalan PJU 8/6, Jalan PJU 8/7, Jalan PJU 8/7A-D&G <p>PJU 10 Sutera Damansara Ria 1&2</p> <ul style="list-style-type: none"> • Jalan PJU 10/16 & 16A-E <p>PJU 10 The Vale Sutera Damansara</p> <ul style="list-style-type: none"> • Jalan PJU 10/18 & 18A <p>PJU 10 Saujana Damansara Damai</p> <ul style="list-style-type: none"> • Jalan PJU 10/12 & 12A-B, Jalan PJU 10/14 & 14A-H&J <p>PJU 10 Damansara Damai</p> <ul style="list-style-type: none"> • Jalan PJU 10/11 & 11A - F
<p style="text-align: center;">SELASA Tuesday</p>	<p>Sunway Damansara</p> <ul style="list-style-type: none"> • Parkville Residency (PJU3/32-37) <p>Seksyen 19</p> <p>PJU 8 Rafflesia @ Damansara Perdana</p> <ul style="list-style-type: none"> • Jalan PJU 8/12B - E <p>PJU 8 Forest Hill</p> <ul style="list-style-type: none"> • Jalan PJU 8/13A - F 	<p>SS3</p> <ul style="list-style-type: none"> • SS 3/45, 3/47, 3/49, 3/51, 3/53, 3/55, 3/66, 3/68, 3/70, 3/72, 3/74, 3/76, 3/78, 3/80, 3/82, SS 3/84, 3/86, 3/88, 3/90, 3/92, 3/94, 3/96, 3/98
<p style="text-align: center;">RABU Wednesday</p>	<p>SS 1</p> <ul style="list-style-type: none"> • SS 1/1 & 1/1a -1d, SS 1/2- SS1/10, SS 1/11, 1/11a & SS 1/12, SS 1/13, 1/13a & 1/13b, SS 1/14, SS1/15 & 1/15a, SS 1/16, 1/16a - 16c, SS 1/17 & 1/18, SS 1/19, 1/19 a- 19c, SS 1/20 & 1/20a, SS 1/21 & 1/21a, AA 1/23, 1/23a - 23c, SS 1/32 - SS1/38, SS1/39 & 1/39a 	<p style="text-align: center;">Seksyen 12</p>
<p style="text-align: center;">KHAMIS Thursday</p>	<p>SS 1</p> <ul style="list-style-type: none"> • SS 1/22, 1/22a & 1/22b, SS 1/24, 1/24a & 1/24b, SS 1/25 - SS1/31, SS 1/41 & 1/41a, SS 1/43, 1/43a & 1/43c 	<p>SS 2</p> <ul style="list-style-type: none"> • SS 2/80, 2/82, 2/84, 2/86 & 2/87, SS 2/89-2/100, SS 2/101 - 2/107, SS 2/109, 2/111 & 2/113, SS 2/2, 2/3, 2/4, SS 2/5 - 2/25, SS 2/15a, SS 2/25a
<p style="text-align: center;">JUMAAT Friday</p>	<p>SS 2</p> <ul style="list-style-type: none"> • SS 2/4a & 4b, SS 2/26- 2/29, SS 2/30 - 2/39, SS 2/40- 2/49, SS 2/50 - 2/59, SS 2/66, 2/68 & SS 2/69, SS 2/70 - 2/79, SS 2/74a & 2/77a, SS 2/81, SS 2/83, SS 2/85, 2/88 	<p>SS 3</p> <ul style="list-style-type: none"> • SS 3/1 - 3/4, 3/6, 3/7, 3/8, 3/10, 3/11, 3/12, 3/13, 3/14, 3/14a, 3/15, 3/16, 3/18, 3/19, 3/20, SS 3/21 - 3/28, 3/30, 3/32, 3/34, 3/36, SS 3/38 - 3/44, 3/46, 3/48, 3/50, 3/52, 3/54, SS 3/56- 3/60, 3/62, 3/64, 3/64a, SS 3/59, 59 a-d
<p style="text-align: center;">SABTU Saturday</p>	<p>Seksyen 20</p> <p>Seksyen 22</p> <p>PJU 10 Sutera Damansara Ria 3</p> <ul style="list-style-type: none"> • Jalan PJU 10/17 <p>PJU 10 Sutera Springs</p> <ul style="list-style-type: none"> • Jalan PJU 10/17 & 17A <p>PJU 10 Bayu Damansara</p> <ul style="list-style-type: none"> • Jalan PJU 10/15 & 15A 	<p>PJU 10 Saujana Damansara Damai</p> <ul style="list-style-type: none"> • Jalan PJU 10/13 & 13A-H, Jalan PJU 10/13J-L <p>PJU 10 Desa Riang</p> <ul style="list-style-type: none"> • Jalan PJU 10/6, Jalan PJU 10/7 & 7A, Jalan PJU 10/8 & 8A <p>SS 8</p> <ul style="list-style-type: none"> • SS 8/8 & SS 8/8a <p>SS 9</p> <ul style="list-style-type: none"> • SS 9A/3 & 9A/4, SS 9A/8 - 9A/11, SS 9A/16, 9A/17 & 9A/19, SS 9A/12, 9A/13, 9A/15 & 9A/18



JADUAL KUTIPAN MBPJ FASA 5

MBPJ PHASE 5 COLLECTION SCHEDULE

ISNIN Monday	Seksyen 9 Seksyen 6	Seksyen 21 <ul style="list-style-type: none">• Jalan 21/2 -10• Jalan 21 / 10 A• Jalan 21 / 13• Jalan 21 / 15• Jalan 21 / 18• Jalan 21/ 20 - 35
SELASA Tuesday	Seksyen 7 Seksyen 51 A Seksyen 5 <ul style="list-style-type: none">• Jalan Tanjung 5/4• Jalan 5/4• 4A - J, 10A - F, 12, 13, 13E - J, 17, 17 A - D, 19• 21A - D, 31, 31A, 33, 35, 37, 39, 41• 5/15, 5/15 B - G, and 19 A - C	Seksyen 2 Seksyen 4 Seksyen 18 Seksyen 8
RABU Wednesday	Seksyen 5 <ul style="list-style-type: none">• Jalan Changkat, Jalan Lembah 5/2, Jalan 5/1• Jalan 5/3, Jalan Teluk, Jalan 5/42 - 46• Jalan 5/48 - 50, Lorong 5/49 A, Jalan 5/52-56• Jalan 5/58, Lorong 58A & B, Jalan 5/60 & 61• Jalan 5/ 63 - 67, Lorong 5/ 66A, Jalan 5/69• Jalan 5/6A - B, Lorong 7, Lorong 7A• Jalan Putri 5/9, Lorong Putri 5/9A - F Seksyen 3	Seksyen 17 <ul style="list-style-type: none">• Jalan 17/ 1, 17 / 2, 17 / 4, 17/ 6, 17 / 8• Jalan 17/ 12, 17 / 13 & 13A• Jalan 17/15, 17/17, 17/18, 18A• Jalan 17/19, 17/20
KHAMIS Thursday	Seksyen 17 <ul style="list-style-type: none">• Jalan yang tidak termasuk di jadual Hari Rabu• Remaining roads that are not mentioned on Wednesday	Seksyen 1A Seksyen 21 <ul style="list-style-type: none">• Jalan 21 / 1A, 14, 16



KEMAS KINI: JADUAL KUTIPAN PROGRAM KITAR SEMULA KAEDAH PINTU-KE-PINTU BANDAR UTAMA

UPDATED RECYCLING SCHEDULE: BANDAR UTAMA

HARI DAY	KAWASAN AREA	MINGGU WEEK	TARIKH OPERASI PENGUTIPAN COLLECTION DATES								
			APR	MAY	JUN	JUL	AUG	SEP	OCT	NOV	DEC
Jumaat Friday	BU 6	Week 1 and 3	10 th	8 th	5 th	3 rd	14 th	11 th	9 th	6 th	4 th
	BU 11		24 th	22 nd	19 th	17 th 31 st	28 th	25 th	23 rd	20 th	18 th
	BU 7	Week 2 and 4	3 rd	15 th	12 th	10 th	7 th	4 th	2 nd	6 th	18 th
	BU 10		17 th	29 th	26 th	24 th	21 st	18 th	16 th 30 th	27 th	25 th
Sabtu Saturday	BU 1	Week 1 and 3	11 th	9 th	6 th	4 th	1 st	12 th	10 th	21 st	5 th
	BU 2		25 th	23 rd	20 th	18 th	15 th 29 th	26 th	24 th 31 st	28 th	19 th
	BU 3	Week 2 and 4	4 th	2 nd	13 th	11 th	8 th	5 th	3 rd	14 th	12 th
	BU 4		18 th	16 th 30 th	27 th	25 th	22 nd	19 th	17 th 31 st	28 th	26 th
	BU 12										

PERHATIAN / IMPORTANT NOTICE

Kutipan kitar semula tidak akan dijalankan pada hari cuti umum kecuali dimaklumkan sebaliknya
Recycling collection will not take place on public holidays unless otherwise stated

APARTMENT RECYCLING PROGRAMME



**Pangsapuri Subang
Ville Ehsan**

**SuriaMas
Condominium**

**Suria Apartment
Block D & E**

**Pelangi Damansara
Blok G-K**

ATWATER Residence

Pangsapuri Latan Biru

Menara SD

SD Courts

Villaria

- Untuk maklumat lanjut tentang program kitar semula di kediaman anda, sila hubungi pihak Badan Pengurusan Bersama.
- For more information about the recycling programme in your building, please contact your Joint Management Body.



BARANGAN KITAR SEMULA YANG DITERIMA

ITEMS ACCEPTED FOR RECYCLING

KERTAS PAPER



Kertas lama, cebisan kertas, sampul surat, surat khabar, majalah & katalog, direktori perniagaan

Old paper, shredded paper, envelope, newspaper, magazine and business directory

**Cebisan kertas perlu dikumpulkan dalam bag berasingan*

**Shredded paper must be placed in a separate bag*

KADBOD CARDBOARD



Kotak coklat, kotak kasut, kotak hadiah, kotak bijirin

Chocolate box, shoe box, gift box, and cereal box

**Semua kadbod perlu dileperkan*

**All cardboard boxes must be flattened*

KOTAK MINUMAN USED BEVERAGE CARTON



Kotak minuman susu, jus buah-buahan dan minuman lain

Packages for milk, fruit juices and other beverages

KACA GLASS



Semua jenis botol kaca dan balang

All types of glass bottle and jar

**Sila tanggalkan penutup botol kaca sebelum mengitar semula*

**Please remove glass bottle lids before recycling*

PLASTIK PLASTIC



Semua jenis plastik boleh diterima

All types of plastic is acceptable

LOGAM METAL



Tin makanan & minuman, dulang aluminium

Food and beverage cans, aluminium trays



BARANGAN YANG TIDAK DITERIMA

ITEMS NOT ACCEPTED FOR RECYCLING



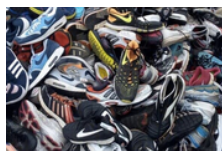
Tisu terpakai

Used tissues



Cermin

Mirror



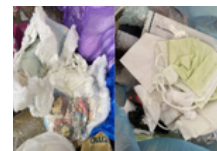
Kasut

Shoes



Beg bagasi

Luggage bags



Sisa klinikal

Clinical waste



Minyak masak terpakai

Used cooking oil



Tayar

Tyres



Sisa basah/ dapur

Wet/ kitchen waste



Puntung Rokok

Cigarette buds



Lampin

Diapers



Perabot kayu

Wooden furnitures



Sisa elektronik

Electronic waste

INGIN MENGENALI PROGRAM KAMI DENGAN LEBIH LANJUT?

Want to know more about our programme?

1



Imbas kod QR ini untuk melayari laman sesawang Nestlé Malaysia!

Scan this QR code and visit the Nestlé Malaysia website

2

Muat turun aplikasi "3R Famili"

Download the "3R Famili" application

Collection schedule
Jadual Kutipan

Truck arrival notification
Notifikasi ketibaan trak

Contact us via Whatsapp
Hubungi kami melalui WhatsApp

Real time truck location
Lokasi trak secara langsung

Request to collect
Permintaan untuk kutipan

Download on the App Store

GET IT ON Google Play

Sebarang pertanyaan, sila hubungi:

Any enquiries, kindly contact

JABATAN PENGURUSAN SISA PEJAL & PEMBERSIHAN AWAM

Majlis Bandaraya Petaling Jaya,

Tingkat 20, Menara MBPJ, Jalan Tengah,
46200 Petaling Jaya, Selangor Darul Ehsan.

03-7954 1440 (Tel) | 03-7954 1579



<https://www.mbpj.gov.my/ms/jadual-kutipan-kitar-semula-di-kawasan-petaling-jaya>