



PROGRAM KITAR SEMULA

KAEDAH PINTU-KE-PINTU

DOOR-TO-DOOR COLLECTION AND
RECYCLING
PROGRAMME

MPKL



Rakan Kongsi Bersama:
In Collaboration With:





JADUAL KUTIPAN MINGGUAN PROGRAM **KITAR SEMULA** KAEDAH **PINTU-KE-PINTU** MPKL FASA 1 TERKINI

UPDATED MPKL WEEKLY DOOR-TO-DOOR COLLECTION & RECYCLING PHASE 1 COLLECTION SCHEDULE

ISNIN Monday	Bandar Rimbayu <ul style="list-style-type: none">• Livia• Penduline• Robin	Eco Sanctuary <ul style="list-style-type: none">• Monterey• Terazza
SELASA Tuesday	Taman Banting Baru <ul style="list-style-type: none">• BB 1 - BB 5• BB 6 & BB 7	Bandar Saujana Putra <ul style="list-style-type: none">• SP 10• SP 6
RABU Wednesday	Bandar Saujana Putra <ul style="list-style-type: none">• SP 3• SP 4 / 4 - SP 4 / 7	Bandar Rimbayu <ul style="list-style-type: none">• Starling
KHAMIS Thursday	Tropicana Aman <ul style="list-style-type: none">• Bayan• Gemala	Bandar Rimbayu <ul style="list-style-type: none">• Periwinkle• Wisteria• Scarlet
JUMAAT Friday	Bandar Saujana Putra <ul style="list-style-type: none">• SP 4 / 8 - SP 4 / 23• SP 7	
SABTU Saturday	Tropicana Aman <ul style="list-style-type: none">• Dahlia• Elemen• Freesia• Ceria	Eco Sanctuary <ul style="list-style-type: none">• Grandezza• Sencillia Bandar Saujana Putra <ul style="list-style-type: none">• SP 9

PERHATIAN / IMPORTANT NOTICE

Kutipan kitar semula tidak akan dijalankan pada hari cuti umum. Sebarang kemas kini akan dimaklumkan melalui kumpulan WhatsApp dari semasa ke semasa

Recycling collection will not take place on public holidays. Any updates will be communicated via the WhatsApp group in due course



BARANGAN KITAR SEMULA YANG DITERIMA

ITEMS ACCEPTED FOR RECYCLING

KERTAS PAPER



Kertas lama, cebisan kertas, sampul surat, surat khabar, majalah & katalog, direktori perniagaan

Old paper, shredded paper, envelope, newspaper, magazine and business directory

**Cebisan kertas perlu dikumpulkan dalam bag berasingan*

**Shredded paper must be placed in a separate bag*

KADBOD CARDBOARD



Kotak coklat, kotak kasut, kotak hadiah, kotak bijirin

Chocolate box, shoe box, gift box, and cereal box

**Semua kadbod perlu dileperkan*

**All cardboard boxes must be flattened*

KOTAK MINUMAN USED BEVERAGE CARTON



Kotak minuman susu, jus buah-buahan dan minuman lain

Packages for milk, fruit juices and other beverages

KACA GLASS



**Sila tanggalkan penutup botol kaca sebelum mengitar semula*

**Please remove glass bottle lids before recycling*

PLASTIK PLASTIC



Semua jenis plastik boleh diterima

All types of plastic is acceptable

LOGAM METAL



Tin makanan & minuman, dulang aluminium

Food and beverage cans, aluminium trays

SISA ELEKTRONIK E-WASTE



Semua jenis elektronik bersaiz kecil dan mudah alih

All types of electronic wastes that are small and portable

**Sisa elektronik bersaiz besar seperti peti sejuk dan mesin basuh tidak diterima dalam program ini*

**Bulky electronic waste such as refrigerator and washing machine are not accepted in this programme*



BARANGAN YANG TIDAK DITERIMA

ITEMS NOT ACCEPTED FOR RECYCLING



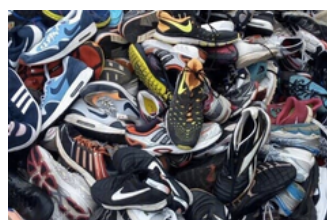
Tisu terpakai

Used tissues



Cermin

Mirror



Kasut

Shoes



Beg bagasi

Luggage bags



Sisa klinikal

Clinical waste



Minyak masak terpakai

Used cooking oil



Tayar

Tyres



Sisa basah/ dapur

Wet/ kitchen waste



Puntung Rokok

Cigarette buds



Lampin

Diapers



Perabot kayu

Wooden furnitures

INGIN MENGENALI PROGRAM KAMI DENGAN LEBIH LANJUT?

Want to know more about our programme?

1



Imbas kod QR ini untuk melayari laman sesawang Nestlé Malaysia!

Scan this QR code and visit the Nestlé Malaysia website

2

Muat turun aplikasi "3R Famili"

Download the "3R Famili" application

Download on the App Store



GET IT ON Google Play



Sebarang pertanyaan, sila hubungi:
Any enquiries, kindly contact



JABATAN PERANCANGAN PEMBANGUNAN

Majlis Perbandaran Kuala Langat,
Jalan Mahkamah, Telok Datok,
42700 Banting, Selangor



+6012-300 4891



+603-31803143

+6012-300 4180

(WhatsApp)



<https://www.mpkl.gov.my/hubungi-kami>